

## ProQinase™ EPHA5 (EPH receptor A5)

**Recombinant Human Active Protein Kinase**

**Synonyms:** CEK7, EHK1, HEK7, TYRO4

**Product No.:** 0739-0000-1

**Lot:** 001

**Description:** Human EPHA5, C-terminal fragment, amino acids S<sub>595</sub>-L<sub>1037</sub> (as in GenBank entry NM\_004439.3)\*, activated, N-terminal GST-HIS<sub>6</sub> fusion protein with a Thrombin and a 3C cleavage site, expressed in Sf9 insect cells

\*Sequence may contain documented polymorphisms  
Detailed aa-sequence on request

**Product identity:** EPHA5, Lot 001, was confirmed as EPHA5 by mass spectroscopy LC-ESI-MS/MS

**Theoretical MW**<sub>Fusion Protein</sub>: 80,683 Da

**Expression:** Baculovirus infected Sf9 cells

**Activation:** in vitro auto-activation

**Purification:** GST-Affinity Chromatography

**Storage buffer:** 50 mM HEPES pH 7.5, 100 mM NaCl, 5 mM DTT, 15 mM reduced glutathione, 20% glycerol

**Storage temperature:** -80°C  
Avoid repeated freeze-thaw cycles!

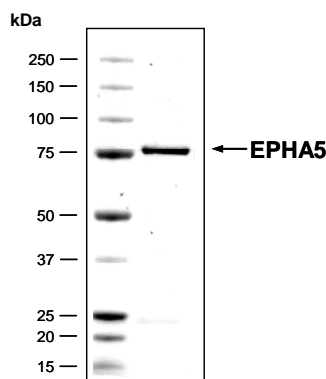
**Protein concentration:** 0.167 µg/µl  
(Bradford method using BSA [Sigma, cat# A-7638, Lot 79H7641] as standard protein)

### Determination of K<sub>m</sub> value & Specific activity:

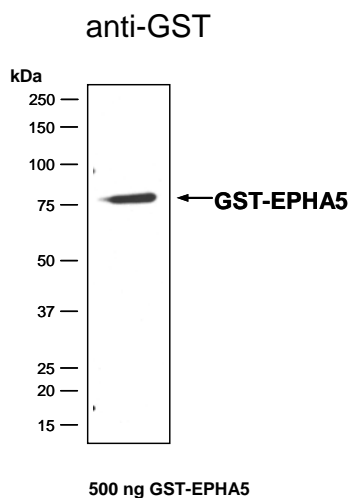
- Assay conditions:
  - 60 mM HEPES-NaOH, pH 7.5
  - 3 mM MgCl<sub>2</sub>
  - 3 mM MnCl<sub>2</sub>
  - 3 µM Na-orthovanadate
  - 1.2 mM DTT
  - 2.5 µg / 50 µl PEG<sub>20,000</sub>
  - ATP (variable)
  - Substrate: Poly(Glu,Tyr)<sub>4:1</sub> (Sigma P-0275), 10 µg / ml
  - EPHA5: 400 ng / ml
- Filter binding assay  
MSFC membrane (Millipore)

**Specific activity:** 247 pmol/µg×min

### Coomassie stain:



### Western blot analysis:



### Determination of K<sub>m</sub> value for ATP:

