

ProQinase™ PIM1

Pim-1 oncogene

Recombinant Human Active Protein Kinase

HGNC Symbol: PIM1

Synonyms: PIM

Product No.: 0186-0000-1

Lot: 003

Description: Human PIM1, full length, amino acids M₁-K₃₁₃ (as in NCBI/Protein entry NP_002639.1), N-terminal GST-HIS₆ fusion protein with a Thrombin cleavage site, expressed in Sf9 insect cells

Product identity: PIM1 Lot 003, was confirmed as PIM1 by mass spectroscopy LC-ESI-MS/MS

Theoretical MW_{Fusion Protein}: 65,423 Da

Expression: Baculovirus infected Sf9 cells

Purification: GST-Affinity Chromatography

Activation: This kinase was not activated by special procedures

Storage buffer: 50 mM TRIS-HCL pH 8.0, 100 mM NaCl, 5 mM DTT, 15 mM reduced glutathione, 20% glycerol

Storage temperature: -80°C

For complete recovery, mix well and spin before use. Product must not be stored in diluted solutions, aliquots below 10µl are not advisable. Avoid repeated freeze-thaw cycles!

Protein concentration: 0.185 µg/µl
(Bradford method using BSA [Sigma, cat# A-7638, Lot 79H7641] as standard protein)

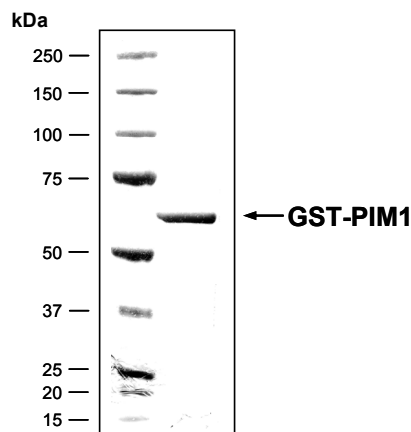
Biochemical Parameters:

Specific kinase activity (P_i transfer): 273 pmol/µg×min
ATP-K_M: 0.5 µM

Additional assay technology: PIM1 Lot 003

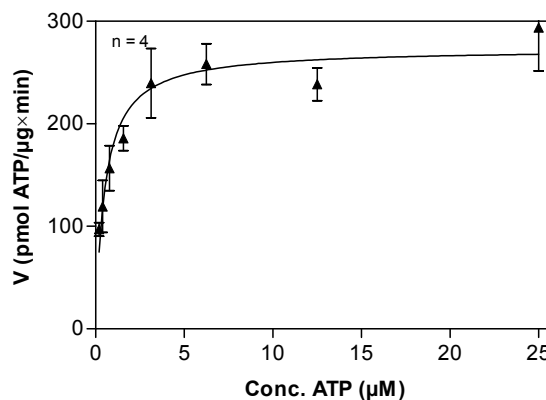
was also successfully tested by Reaction Biology for the use with the ADP-Glo™ Kinase assay from ADP-Glo assay conditions may vary from radiometric assay conditions, please inquire for assay details

PIM1 Lot 003: Coomassie stain



2.0 µg GST-PIM1

PIM1 Lot 003: Determination of V_{max} and K_M value for ATP



Determination of K_M value & Specific activity:

- Assay conditions:
 - 60 mM HEPES-NaOH, pH 7.5
 - 3 mM MgCl₂
 - 3 mM MnCl₂
 - 3 µM Na-orthovanadate
 - 1.2 mM DTT
 - 50 µg / ml PEG_{20,000}
 - ATP (variable)
 - Substrate: R₁₁-GSK3(14-27) (R₁₁-SGRARTSSFAEPGGK), 100 µg / ml
 - PIM1: 0.1 µg / ml
- Filter binding assay
 - MSPH membrane (Millipore)

ProQinase™ PIM1

Product No.: 0186-0000-1

PIM1 Recombinant Fusion Protein Amino Acid Sequence							
1	MSPILGYWKI	KGLVQPTRL	LEYLEEKYEE	HLYERDEGDK	WRNKKFELGL	EFPNLPYYID	60
61	GDVKLTQSMA	IIRYIADKHN	MLGGCPKERA	EISMLEGAVL	DIRYGVSRIA	YSKDFETLKV	120
121	DFLSKLPPEML	KMFEDRLCHK	TYLNGDHVTH	PDFMLYDALD	VVLYMDPMCL	DAFPKLVCFK	180
181	KRIEAIPOID	KYLKSSKYIA	WPLQGWQATF	GGGDHPPKSD	PMG HHHHHH G	RRRASVAAGI	240
241	LVPRGS PGLD	GIYARGIQ ML	L SKIN S LAHL	RA APCND LHA	TK LAPG KEKE	P LESQ YQVGP	300
301	LLGSGGFGSV	YSGIRVSDNL	PVAIKHVEKD	RISDWGELPN	GTRVPMEVVL	LKKVSSGFGS	360
361	VIRLLDWFER	PDSFVLILER	PEPVQDLDF	ITERGALQEE	LARSFFWQVL	EAVRHCHNCG	420
421	VLHRDIKDN	ILIDLNRGEL	KLIDFGSGAL	LKDTVYTFD	GTRVYSPPEW	IRYHRYHGRS	480
481	AAVWSLGILL	YDMVCGDIPF	EHDEEIIIRGQ	VFFRQRVSSE	CQHLIRWCLA	LRPSDRPTFE	540
541	EIQNHPPWQD	VLLPQETAEI	HLHLSLSPGPS	K			600

1-218: GST **Red:** HIS6-tag **Pink:** Thrombin cleavage site **blue:** PIM1

PIM1 wt ¹ Amino Acid Sequence							
1	MLLSKINSLA	HLRAAPCNDL	HATKLAPGKE	KEPLESQYQV	GPLLGSGGFG	SVYSGIRVSD	60
61	NLPVAIKHVE	KDRISDWGEL	PNGTRVPMEV	VLLKKVSSGF	SGVIRLLDWF	ERPDSFVLIL	120
121	ERPEPVQDLF	DFITERGALQ	EELARSFFWQ	VLEAVRHCHN	CGVLHRDIKD	ENILIDLNRG	180
181	ELKLIDFGSG	ALLKDTVYTD	FDGTRVYSP	EWIRYHRYHG	RSAAVWSLGI	LLYDMVCGDI	240
241	PFEHDEEIIIR	GQVFFRQRVS	SECQHLIRWC	LALRPSDRPT	FEEIQNHPPWM	QDVLLPQETA	300
301	EIHLHLSLSPG	PSK					360

blue: PIM1 sequence expressed in fusionprotein

¹NCBI/Protein accession number NP_002639.1

Recombinant Proteins