

## ProQinase™ CFL2

cofilin 2

### Recombinant Protein Kinase Substrate

**HGNC Symbol:** CFL2

**Synonyms:** NEM7

**Product No.:** 1754-0000-1

**Lot:** 001

**Description:** CFL2, full length, amino acids M1-L166 (as in [NCBI/Protein](#) entry NP\_619579.1), N-terminal GST-HIS<sub>6</sub> fusion protein with a 3C cleavage site, expressed in E.coli

**Theoretical MW<sub>Fusion Protein</sub>:** 47,241 Da

**Expression host:** E.coli

**Purification:** GST-Affinity Chromatography

**Storage buffer:** 50 mM HEPES pH 7.5, 100 mM NaCl, 5 mM DTT, 15 mM reduced glutathione, 10 % glycerol

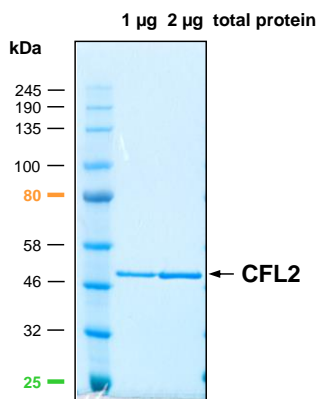
**Storage temperature:** -80°C

For complete recovery, mix well and spin before use. Product must not be stored in diluted solutions, aliquots below 10µl are not advisable. Avoid repeated freeze-thaw cycles!

**Protein concentration:** 1.55 µg/µl  
(Bradford method using BSA [Sigma, cat# A-7638, Lot 79H7641] as standard protein)

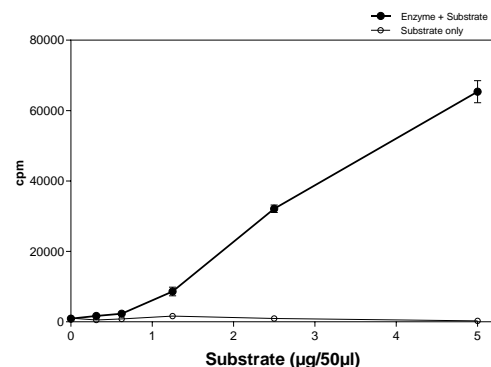
**CFL2 Lot 001:**

**Coomassie stain**



### Phosphorylation of CFL2 by LIMK1

#### Radiometric filter binding assay



#### Assay conditions:

70 mM HEPES-NaOH, pH 7.5  
3 mM MgCl<sub>2</sub>  
3 mM MnCl<sub>2</sub>  
3 µM Na-orthovanadate  
1.2 mM DTT  
50 µg/ml PEG<sub>20,000</sub>  
ATP: 1 µM  
Substrate: variable concentration  
Kinase: 1 µg/ml  
MSFC membrane (Millipore)

#### Field of application:

CFL1 has been validated for use in radiometric in-vitro kinase activity assays. It was not validated for use in ATP-consumption based kinase activity assays.

Recombinant Proteins

Sequence information

GST-CFL2 Recombinant Fusion Protein Amino Acid Sequence							
1	MSPILGYWKI	KGLVQPTRL	LEYLEEKYEE	HLYERDEGDK	WRNKKFELGL	EFNLPYYID	60
61	GDVKLTQSMA	IIRYIADKHN	MLGGCPKERA	EISMLEGAVL	DIRYGVSRIA	YSKDFETLKV	120
121	DFLSKLP EML	KMFKDRLCHK	TYLNGDHVTH	PDFMLYDALD	VVLYMDPMCL	DAFPKLVCFK	180
181	KRIEAI PQID	KYLKSSKYIA	WPLQG WQATF	GGGDHPPKSD	PMGHHHHHG	RDSLEVL FQG	240
241	PLAMVMASGV	TVNDEVIKVF	NDMKVRKSST	QEEIKKRKKA	VLFLSDDKR	QIIVEEAKQI	300
301	LVGDIGDTVE	DPYTSFVKLL	PLNDCRYALY	DATYETKESK	KEDLVFIFWA	PESAPLKS KM	360
361	IYASSKDAIK	KKFTGIKHEW	QVNLDDIKD	RSTLGEKLG	NVVSLEGKPE	L	420

1-218: GST    Red: HIS6-tag    Green: 3C cleavage site    blue: CFL2

This product was manufactured at Reaction Biology in Freiburg, Germany, and is for in vitro research use only, not for use in human or animals.  
 © European Union, 2020. Material may not be reproduced or distributed without written permission from Reaction Biology Europe GmbH