

ELK1

ETS transcription factor ELK1

Recombinant Protein

HGNC Symbol: ELK1

Synonyms: /

Product No.: 1211-0000-1

Lot: 003

Description: Human ELK1, full length, amino acids M₁-P₄₂₈ (as in [NCBI/Protein](#) entry NP_005220.2), N-terminal GST-HIS₆ fusion protein with a 3C cleavage site, expressed in Sf9 cells

Theoretical MW_{Fusion Protein}: 73,163 Da

Expression host: Sf9 insect cells

Purification: GST-Affinity Chromatography

Storage buffer: 50 mM HEPES pH 7.5, 100 mM NaCl, 5 mM DTT, 15 mM reduced glutathione, 20 % glycerol

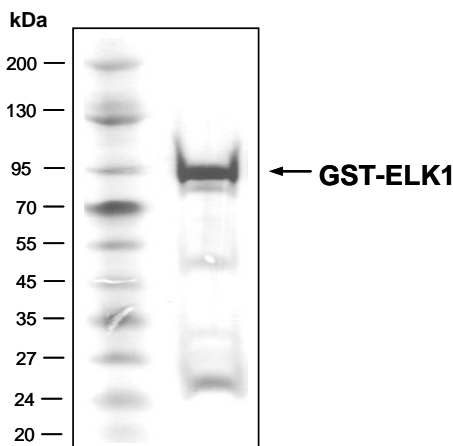
Storage temperature: -80°C

For complete recovery, mix well and spin before use. Product must not be stored in diluted solutions, aliquots below 10µl are not advisable. Avoid repeated freeze-thaw cycles!

Protein concentration: 0.463 µg/µl
(Bradford method using BSA [Sigma, cat# A-7638, Lot 79H7641] as standard protein)

ELK1 Lot 003:

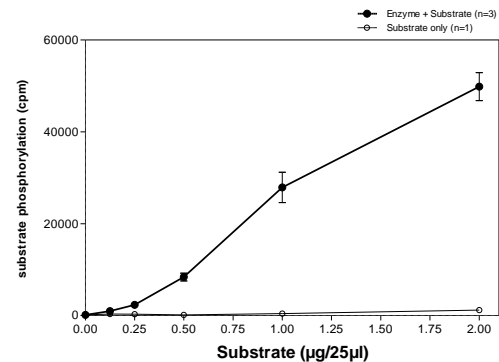
Coomassie stain



2.0 µg GST-ELK1

Phosphorylation of ELK1 by ERK2

Radiometric filter binding assay



Assay conditions:
70 mM HEPES-NaOH, pH 7.5
3 mM MgCl₂
3 mM MnCl₂
3 µM Na-orthovanadate
1.2 mM DTT
50 µg/ml PEG_{20,000}
ATP: 1 µM
Substrate: variable concentration
Kinase: 2 µg/ml
MSFC membrane (Millipore)

Field of application:

ELK1 has been validated for use as substrate in radiometric in-vitro kinase activity assays.

This product was manufactured at ProQinase in Freiburg, Germany, and is for in vitro research use only, not for use in humans or animals. ProQinase disclaims any warranty explicitly or implied that the use of the product or parts of the product is free from third party intellectual property claims unless this is explicitly stated.

ELK1

Product No.: 1211-0000-1

ELK1 Recombinant Fusion Protein Amino Acid Sequence							
1	MSPILGYWKI	KGLVQPTRL	LEYLEEKYEE	HLIERDEGDK	WRNKKFELGL	EFPNLPYYID	60
61	GDVKLTQSMA	IIRYIADKHN	MLGGCPKERA	EISMLEGAVL	DIRYGVSRIA	YSKDFETLKV	120
121	DFLSKLPPEML	KMFEDRLCHK	TYLNGDHVTH	PDFMLYDALD	VVLYMDPMCL	DAFPKLVCFK	180
181	KRIEAIPOID	KYLKSSKYIA	WPLQGWQATF	GGGDHPPKSD	PMGHHHHHG	RDSLEVLFGG	240
241	PLAMDPSVTL	WQFLQLLRE	QGNHHIISWT	SRDGGFEKLV	DAEEVARLWG	LRKNKTNMNY	300
301	DKLSRALRY	YDKNIIRKVS	GQKFVYKFVS	YPEVAGCSTE	DCPPQPEVSV	TSTMPNVAPA	360
361	AIHAAPGDTV	SGKPGTPKGA	GMAGPGGLAR	SSRNEYMRSG	LYSTFTIQSL	QPQPPHPRP	420
421	AVVLPSAAPA	GAAAPPSGSR	STSPSPLEAC	LEAEEAGLPL	QVILTPPEAP	NLKSEELNVE	480
481	PGLGRALPPE	VKVEGPKKEEL	EVAGERGFVP	ETTKAEPEVP	PQEGVPARLP	AVVMDTAGQA	540
541	GGHAASSPEI	SQPQKGRKPR	DLELPLSPSL	LGGPGPERTP	GSGSGSGLQA	PGPALTPSLL	600
601	PTHTLTPVLL	TPSSLPSPSIH	FWSTLSPIAP	RSPAKLSFQF	PSSGSAQVHI	PSISVDGLST	660
661	PVVLSPGPQK	P					720

1-218: GST Red: HIS6-tag Green: 3C cleavage site blue: ELK1

ELK1 wt1 amino acid sequence							
1	MDPSVTLWQF	LLQLLREQGN	GHIISWTSRD	GGEFKLVDAE	EVARLWGLRK	NKTNMNYDKL	60
61	SRALRYYYDK	NIIRKVSQK	FVYKFSYYPE	VAGCSTEDCP	PQPEVSVTST	MPNVAPAAIH	120
121	AAPGDTVSGK	PGTPKGAGMA	GPGGLARSSR	NEYMRSGLYS	TFTIQSLQPQ	PPHPRPAVV	180
181	LPSAAPAGAA	APPSGSRSTS	PSPLEACLEA	EEAGLPLQVI	LTPPEAPNLK	SEELNVEPGL	240
241	GRALPPEVKV	EGPKEELEVA	GERGFVPETT	KAEPEVPPQE	GVPARLPAVV	MDTAGQAGGH	300
301	AASSPEISQP	QKGRKPRDLE	LPLSPSLLGG	PGPERTPGSG	SGSGLQAPGP	ALTPSLLPTH	360
361	TLTPVLLTPS	SLPPSIHFWS	TLSPAPIRSP	AKLSFQFPSS	GSAQVHPSI	SVDGLSTPVV	420
421	LSPGPQK						480

blue: ELK1 sequence expressed in recombinant protein

¹NCBI/Protein accession number NP_005220.2