

## ProQinase™ MET Y1235D

MET proto-oncogene, receptor tyrosine kinase

Recombinant Human Active Protein Kinase

HGNC Symbol: MET

Synonyms: c-MET, HGFR

Product No.: 0993-0000-1

Lot: 002

**Description:** Human MET, C-terminal fragment, amino acids K<sub>956</sub>-S<sub>1390</sub> (as in [NCBI/Protein](#) entry NP\_000236.2), N-terminal GST-HIS<sub>6</sub> fusion protein with a Thrombin cleavage site, expressed in Sf9 insect cells

**Product identity:** MET Y1235D Lot 002, was confirmed as MET with a mutation Y1235D by mass spectroscopy LC-ESI-MS/MS

**Theoretical MW<sub>Fusion Protein</sub>:** 78,739 Da

**Expression host:** Sf9 insect cells

**Purification:** GST-Affinity Chromatography

**Activation:** This kinase was not activated by special procedures

**Storage buffer:** 50 mM HEPES pH 7.5, 100 mM NaCl, 5 mM DTT, 15 mM reduced glutathione, 20 % glycerol

**Storage temperature:** -80°C

For complete recovery, mix well and spin before use. Product must not be stored in diluted solutions, aliquots below 10µl are not advisable. Avoid repeated freeze-thaw cycles!

**Protein concentration:** 0.340 µg/µl

(Bradford method using BSA [Sigma, cat# A-7638, Lot 79H7641] as standard protein)

**Biochemical Parameters:**

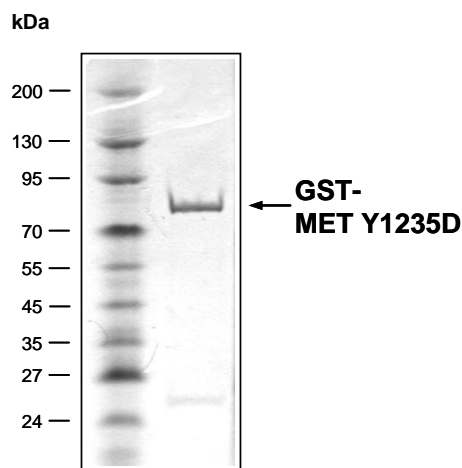
Specific kinase activity (P<sub>i</sub> transfer): 161 pmol/µg × min  
ATP-K<sub>M</sub>: 14 µM

**Additional assay technology:**

MET Y1235D Lot 002 was also successfully tested by Reaction Biology for the use with the ADP-Glo™ Kinase assay from Promega ADP-Glo assay conditions may vary from radiometric assay conditions, please inquire for assay details

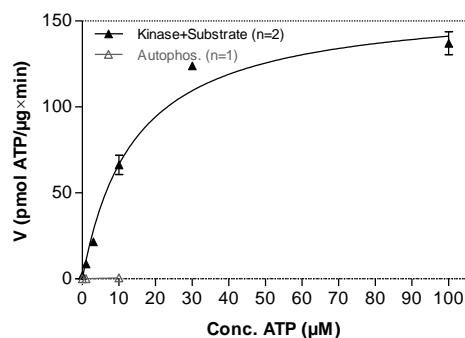
This product was manufactured at Reaction Biology in Freiburg, Germany, and is for in vitro research use only, not for use in humans or animals.  
© European Union, 2020. Material may not be reproduced or distributed without written permission from Reaction Biology Europe GmbH

**MET Y1235D Lot 002:  
Coomassie stain**



2.0 µg GST-MET Y1235D

**MET Y1235D Lot 002:  
Determination of V<sub>max</sub> and K<sub>M</sub> value for ATP**



**Determination of K<sub>M</sub> value & Specific activity:**

- Assay conditions:
  - 60 mM HEPES-NaOH, pH 7.5
  - 3 mM MgCl<sub>2</sub>
  - 3 mM MnCl<sub>2</sub>
  - 3 µM Na-orthovanadate
  - 1.2 mM DTT
  - 50 µg/ml PEG<sub>20,000</sub>
  - ATP (variable)
  - Substrate: TRK-C-derived Peptide, 20 µg/ml
  - Kinase: 1 µg/ml
- Filter binding assay  
MSPH membrane (Millipore)

# ProQinase™ MET Y1235D

Product No.: 0993-0000-1

GST-MET Y1235D Recombinant Fusion Protein Amino Acid Sequence							
1	MSPILGYWKI	KGLVQPTRL	LEYLEEKYEE	HLYERDEGDK	WRNKKFELGL	EFPNLPYYID	60
61	GDVKLTQSMA	IIRYIADKHN	MLGGCPKERA	EISMLEGAVL	DIRYGVSRIA	YSKDFETLKV	120
121	DFLSKLPPEML	KMFEDRLCHK	TYLNGDHVTH	PDFMLYDALD	VVLYMDPMCL	DAFPKLVCFK	180
181	KRIEAIPIQID	KYLKSSKYIA	WPLQGWQATF	GGGDHPPKSD	PMGHHHHHG	RRRASVAAGI	240
241	LVPRGSPGLD	GICSIEEFKK	RKQIKDLGSE	LVRVDARVHT	PHLDRLVSAR	SVSPTTEMVS	300
301	NESVDYRATF	PEDQFPNSSQ	NGSCRQVQYP	LTDMSPI LTS	GSDISSPLL	QNTVHIDL SA	360
361	LNPELVQAVQ	HVVIGPSSLI	VHFNEVIGRG	HFGCVYHGTL	LDNDGKKIHC	AVKSLNRTD	420
421	IGEVSQFLTE	GIIMKDFSHP	NVLSLLGICL	RSEGSPLVVL	PYMKHGDLRN	FIRNETHNPT	480
481	VKDLIGFGLQ	VAKGMKYLAS	KKFVHRDLAA	RNCMLDEKFT	VKVADFGLAR	DMYDKEYDSV	540
541	HNKTKAKLPV	KWMALESLOT	QKFTTKSDVW	SFGVLLWELM	TRGAPPYDPV	NTFDITVYLL	600
600	QGRRLLOPEY	CPDPLYEVML	KCWHPKAEMR	PSFSELVSRI	SAIFSTFIGE	HYVHV NATYV	660
661	NVKCVAPYPS	LLSSEDNADD	EVDTRPASFW	ETS			720

1-218: GST Red: HIS6-tag Pink: Thrombin cleavage site blue: MET fragment boxed: Y1235D

MET wt <sup>1</sup> Amino Acid Sequence							
1	MKAPAVLAPG	ILVLLFTLVQ	RSNGECKEAL	AKSEMNVNMK	YQLPNFTAET	PIQNVILHEH	60
61	HIFLGATNYI	YVLNEEDLQK	VAEYKTGPVL	EHPDCFPQQD	CSSKANLSGG	VWKDNINMAL	120
121	VVDYYDDQL	ISCGSVNRGT	QQRHVFPNH	TADIQSEVHC	IFSPQIEEPS	QCPDCVVSAL	180
181	GAKVLSSVKD	RFINFFVGN	INSSYFPDHP	LHSISVRLK	ETKDGFMFLT	DQSYIDLPE	240
241	FRDSYPIKYV	HAFESNNFIY	FLTVQRETLD	AQTFHTRIR	FCSINSLHSG	YMEMPLECIL	300
301	TEKRKKRSTK	KEVFNIIQAA	YVSKPGAQLA	RQIGASLND	ILFGVFAQSK	PDSAEPMDRS	360
361	AMCAFPKIYV	NDFFNKI VNK	NNVRCLQHFY	GNHEHC FNR	TLLRNSSGCE	ARRDEYRTEF	420
421	TTALQRVDLF	MGQFSEVLLT	SISTFIKGD	TIANLGTSEG	RFMQVVVSR	GPSTPHVNF	480
481	LDSHPVSPEV	IVEHTLNQNG	YTLVITGK	TKIPLNGLGC	RHFQSCSQCL	SAPPFVQC GW	540
541	CHDKCVRSEE	CLSGTWTQQI	CLPAIYK VFP	NSAPLEGGTR	LTICGWDFGF	RRNNKFDLKK	600
600	TRVLLGNESC	TLTLESTMN	TLKCTVGPAM	NKHFNSII	SNGHGTQYS	TFSYVDPVIT	660
661	SISPKYGPMA	GGTLLTTLGN	YLNNGNSRHI	SIGGKTCTLK	SVSNSILECY	TPAQTISTEF	720
721	AVKCLKIDLAN	RETSIFSYRE	DPIVYIEIHT	KSFISGGSTI	TGVGKNLSV	SVPRMIVNH	780
781	EAGRNFVAC	QHRNSSEIIC	CTTPSLQQLN	LQLPLKTKAF	FMLDGILSKY	FDLIYVHNPV	840
841	FKPFKPVMI	SMGNENVLEI	KGNDIDPEAV	KGEVLKVGNK	SCENIHLHSE	AVLCTVPNDL	900
901	LKLNSELNIE	WKQAISSTVL	GKVIVQPDQN	FTGLIAGVVS	ISTALLLLLG	FFLWLKRRKQ	960
961	IKDLGSELVR	YDARVHTPHL	DRLVSARSVS	PTEMVSNES	VDYRATFPED	QFPNSSQNGS	1020
1021	CRQVQYPLTD	MSPILTSGDS	DISSPLLQNT	VHIDLSALNP	ELVQAVQHVV	IGPSSLI VHF	1080
1081	NEVIGRGHFG	CVYHGTL LDN	DGKKIHC AVK	SLNRITDIGE	VSQFLTEGII	MKDFSHPNVL	1140
1141	SLLGICLRSE	GSPLVLPYM	KHGDLRN FIR	NETHNPTVKD	LIGFGLQVAK	GMKYLASKKF	1200
1201	VHRDLAARNC	MLDEKFTVKV	ADFGLARDMY	DKEYYSVHNK	TGAKLPVKWM	ALESLOTQKF	1260
1261	TTKSDVWSFG	VLLWELMTRG	APPYDPVNTF	DITVYLLQGR	RLLQPEYCPD	PLYEVMLKCV	1320
1321	HPKAEMRPSF	SELVSRISAI	FSTFIGEHYV	HVNATYVNVK	CVAPYPSLLS	SEDNADDEVD	1380
1381	TRPASFWETS						1440

blue: MET sequence expressed in recombinant protein Red: variant in recombinant protein

<sup>1</sup>NCBI/Protein accession number <sup>1</sup>NCBI/Protein accession number NP\_000236.2

**Please notice:**

Heterogenous amino acid numbering in the literature.

Starting with Ser755 different amino acid numbering applies when referring to MET splice variant NCBI/Protein AAA59591.1 (additional 18 aa exon between S755/G756)